



2016/17

ANNUAL REPORT

MOVING MUSIC FORWARD



PRESIDENT'S LETTER

This is the most exciting time in the history of the Oregon Symphony. Through passion and artistry, we are touching hearts and inspiring lives throughout our community. Our concerts and education and community engagement programs reach 300,000 annually from our region, with millions more served via far-reaching recording and broadcasting initiatives.

We are pleased to report on our 2016/17 season – which ran from July 1 to June 30. Thank you for your support.

Scott Showalter, president and CEO



EXCELLENCE

Our multi-grammy-nominated orchestra, recognized this year by international publications like *BBC Music Magazine*, inspires diverse audiences through beautiful performances of works spanning many styles and genres.

Throughout the season, we presented 111 full-orchestra performances, including world premieres of commissioned works from rising and established composers, like Kenji Bunch and Chris Rogerson.

Our long-running Gospel Christmas concert featured one of the country's largest community gospel choirs, assembled from dozens of churches throughout the Portland metro area.

Beyond the hall, Oregon Symphony concerts reached the ears of 12 million music lovers through major-label CD releases and nationwide broadcasting.



Kenji Bunch



Chris Rogerson



Gospel Christmas

All Classical
PORTLAND

SymphonyCast[®]
AMERICAN PUBLIC MEDIA

Performance Today[®]
AMERICAN PUBLIC MEDIA

We are proud to bring to Oregon and sw Washington the finest, most celebrated artists in the world.



Jason Alexander



Patti Austin



Joshua Bell



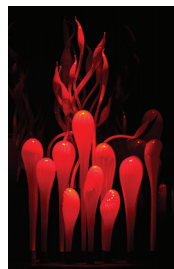
Boyz II Men

INNOVATION



The Oregon Symphony pushed artistic boundaries through programs like 2016/17's SoundSights series, which combined classical music with visual art by leading Northwest artists.

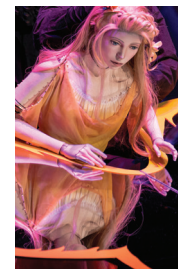
We partnered with Intel to develop experimental wearable technology that enables music to be made through body movement. In 2016/17, new works using this innovative technology were commissioned from percussionists Niel DePonte and Sergio Carreno, and debuted at Oregon Symphony events.



Béla Bartók's *Bluebeard's Castle* with glass sculptures by Dale Chihuly



Olivier Messiaen's *Turangalila* with original video animation by Rose Bond and her team from the Pacific Northwest College of Art



Stravinsky's *Perséphone* featuring original stage design by Michael Curry of *Lion King* fame

ENGAGEMENT



We brought music and opportunities for creative expression to underserved and isolated members of our community



We are proud to serve our community through a robust series of programs and performances in schools, libraries, retirement communities, homeless shelters, and correctional facilities.

In partnership with Carnegie Hall, we continued to expand the Link Up program to bring year-long music education to 5,400 3rd–5th graders from throughout the Portland metro area. This program culminated in a special interactive concert at the Arlene Schnitzer Concert Hall where students played along with the orchestra from their seats.

Our musicNOW program engaged seniors living with dementia through movement and music. This music therapy-informed program was designed in collaboration with the Alzheimer's Association of

Oregon, Marylhurst University's Music Therapy Department, and Earthtones Music Therapy Specialists.

We brought music and opportunities for creative expression to isolated members of our community, such as the youth of St. Mary's and the incarcerated women of the Coffee Creek Correctional Facility.

Oregon Symphony music education programs impacted 61,000 K–12 students – many of whom are under-served – including mentorship and once-in-a-lifetime performance opportunities.

The Oregon Symphony supports a wide community of artists, arts organizations, schools, and nonprofits – as well as the many community members they serve.



Colin Currie



Renée Fleming



Stephen Hough



Stephen Jackiw



Jeffrey Kahane



Kodo



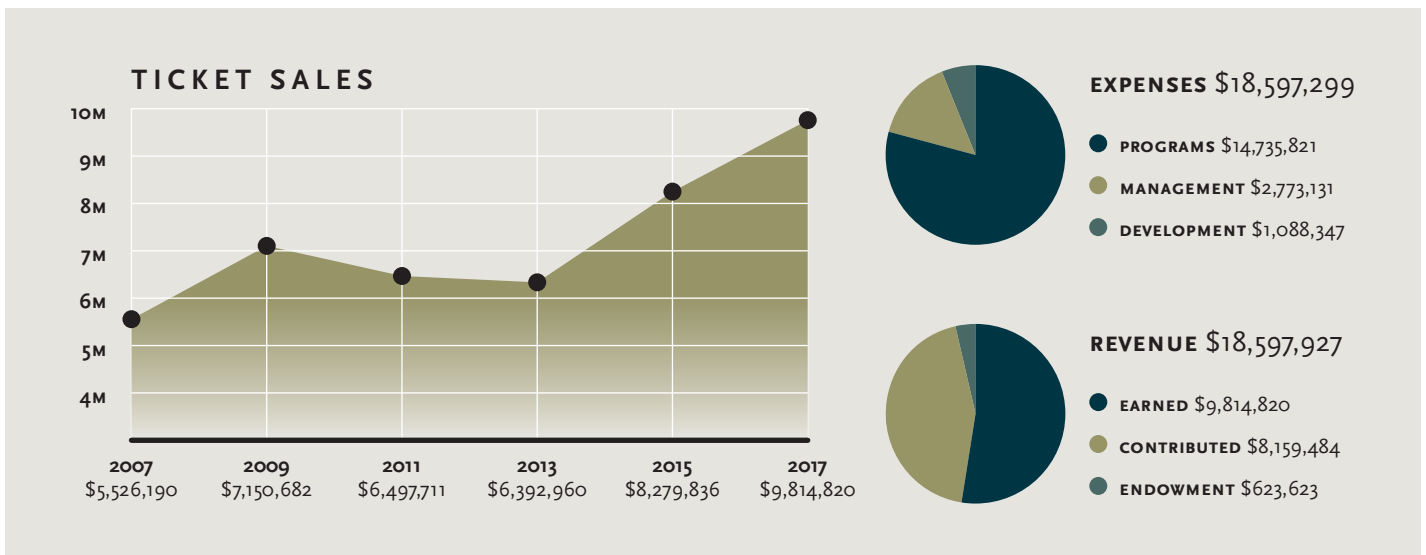
Harriet Krijgh



Together – with our concertgoers, donors, and community partners – we achieved one of the most successful seasons in the Oregon Symphony’s 120-year history. We thank our many supporters who helped make our success possible.

HIGHLIGHTS

- Achieved a balanced budget for an eighth consecutive season.
- Record-breaking ticket sales and donation revenue that surpassed highs set in each of the two previous seasons.
- Set an all-time fundraising record at our annual Gala for the third consecutive year, shattering the \$1,000,000 ceiling with 450 guests across two events.
- Sold out 28 concerts (30% of 94 ticketed concerts in the hall – a new record).
- A record 182,242 seats sold (up 18%), with 26% of all tickets sold to first-time ticket buyers.
- Staged 20% more Classical concert performances, countering national trends.



Simone Lamsma



Wynton Marsalis



Nadja Salerno-Sonnenberg



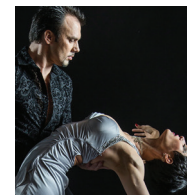
Gil Shaham



Shanghai Acrobats of the People's Republic of China



Jake Shimabukuro



Tango Caliente